



萊英家

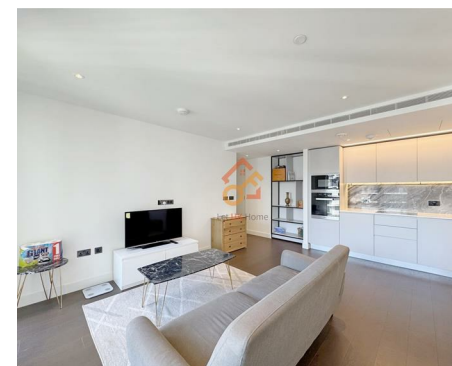
Let UK Home

2 Bedrooms

Flat

Located in London

£3,800 Per Month



pmadmin@letukhome.co.uk

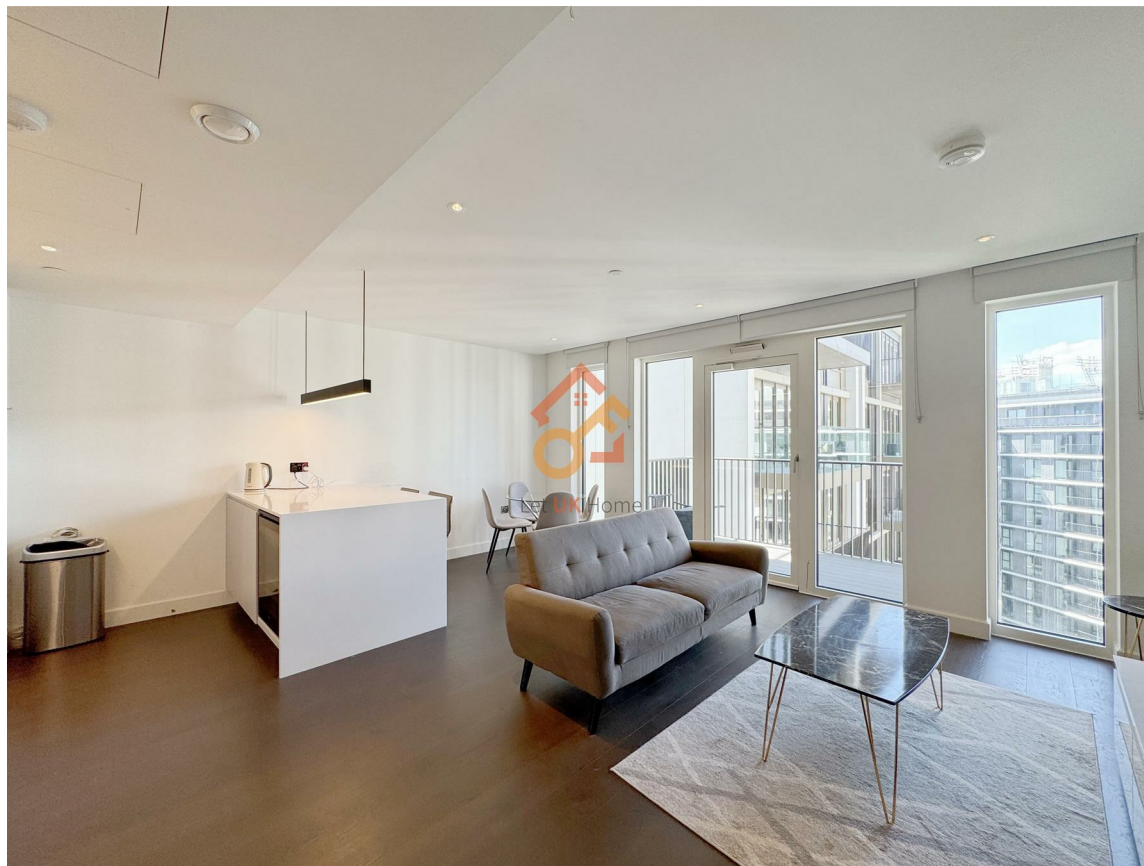
<https://www.letukhome.co.uk/>

020 4534 8145



185 Belvedere Row Apartments Fountain Park Way

London | | W12 7LD



Let UK Home are excited to offer this spectacular two bedroom apartment in the heart of Belvedere Row Apartments part of the White City Living.

This property comprises a large bright open plan kitchen and living room leading to a private balcony, two double bedrooms with wardrobes(master en-suite), a large family sized bathroom and ample storage.

Residents of this exceptional development have exclusive use of indoor swimming pool, gymnasium, two 12-seater cinemas, private dining room, residents lounge and rooftop bar. Residents of this exceptional development will benefit from a 24 hour concierge and an unrivalled selection of shops, bars, restaurants, leisure facilities and beautiful courtyards.

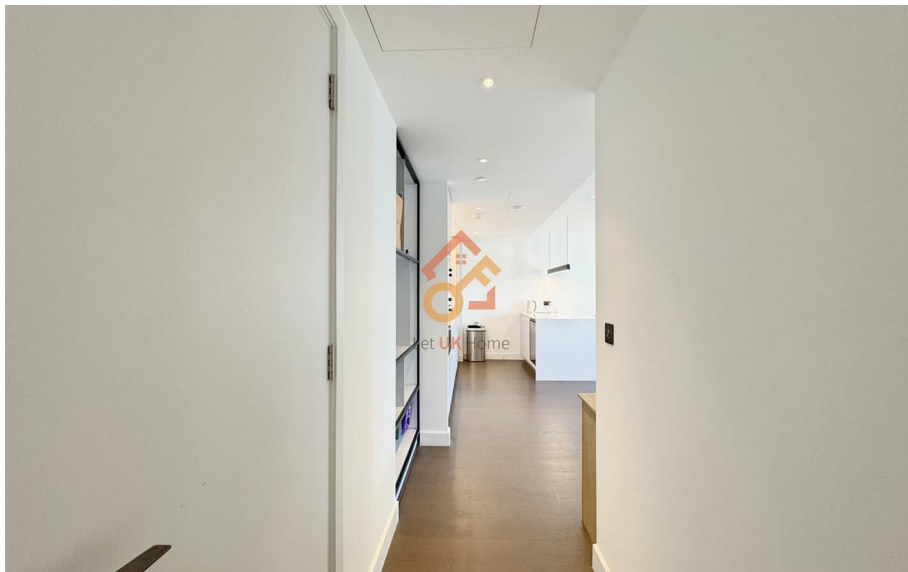
White City Living is surrounded by world-class retail, entertainment, education, cultural and commercial venues, and is within walking distance of Europe's largest shopping mall, Westfield, with more than 500 shops, cinemas, restaurants and supermarkets, providing a wealth of shopping, dining and entertainment options to meet residents daily shopping and leisure needs. Not only that, there are many theatres, concert halls, art galleries and museums nearby such as the Design Museum, Leighton House Museum, Shepherd's Bush Empire, Bush Hall and The Bush Theatre, providing residents with a wealth of cultural and entertainment options. In addition, there are a lot of green spaces in the development, and there are Ravenscourt Park and Holand Park nearby, providing residents with great places for leisure and entertainment.

185 Belvedere Row Apartments Fountain Park Watlington

£3,800 Per Month



- 9th Floor
- 24h Security
- The Spa
- Cinema & Game Room
- Private Dining Room
- Concierge Service
- Swimming Pool
- The Gym
- Residents Lounge





Internal measurements	76.0 m ²	818 sq ft
External measurements	5.0 m ²	53.8 sq ft
Kitchen / Living / Dining	5.51 x 5.36 m	18 ft 0" x 17 ft 7"
Bedroom 1	5.02 x 3.06 m	16 ft 5" x 10 ft 0"
Bedroom 2	3.63 x 2.75 m	11 ft 10" x 9 ft 0"
Balcony	3.41 x 1.47 m	11 ft 2" x 4 ft 10"

PLOTS C0105, C0205, C0305, C0405, C0505, C0605, C0705, C0805, C0905, C1005, C1105



萊英家
Let **UK** Home

6/F Two Kingdom Street

London

W2 6BD

020 4534 8145

pmadmin@letukhome.co.uk

Council Tax Band: F

Local Authority:

Agents Note: Whilst every care has been taken to prepare these particulars, they are for guidance purposes only. All measurements are approximate and are for general guidance purposes only and whilst every care has been taken to ensure their accuracy, they should not be relied upon and potential buyers/tenants are advised to recheck the measurements.

Energy Efficiency Rating		Current	Potential
Very energy efficient - lower running costs			
(92 plus) A		86	86
(81-91) B			
(69-80) C			
(55-68) D			
(39-54) E			
(21-38) F			
(1-20) G			
Not energy efficient - higher running costs			
England & Wales		EU Directive 2002/91/EC	

<https://www.letukhome.co.uk/>